



## **E-MONITORING AND E-REPORTING WORKSHOP**

Pacific Islands Forum Fisheries Agency Headquarters, 31 March – 1 April 2014  
Honiara, SOLOMON ISLANDS

---

**CLS presentation to WCPFC E-Monitoring  
and E-Reporting Workshop**

---

**31 March 2014**

**Guan Oon**



# CLS



**WCFPC E-MONITORING AND E-REPORTING WORKSHOP**  
**Pacific Islands Forum Fisheries Agency Headquarters**  
**31 March – 1 April 2014**  
**Honiara, SOLOMON ISLANDS**

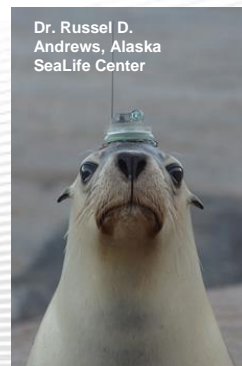
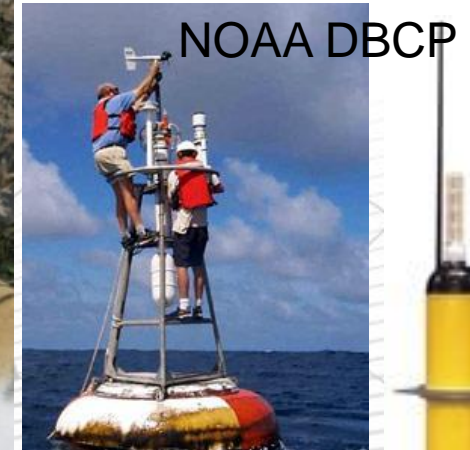
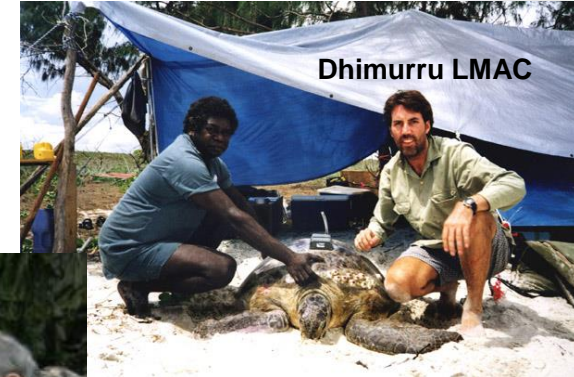
- Company Background
- Applications
- E-reporting (E-R) and E-monitoring (E-M)
- Operational Example – “MARLIN” in the Philippines
- Future
- Summary
- Acknowledgements

- CLS = Collecte Localisation Satellites
- (Data Collection & Tracking via Satellites)
- HQ = Toulouse, France.
- Offices = US, JP, KR, ID, VN, PE, CL, PA, AU & PH (end of 2014 / early 2015).
- Operational ~ 30 years.
- Satellite based / derived:
  - Monitoring, Data Collection, Tracking, Surveillance, Detection, Turn key projects, Ground stations....



- VMS – flag, coastal, licensing states, RFMO (WCFPC, CCAMLR, ICCAT (using CLS VMS software) and non RFMO (FFA)).
- Marine species tracking – tuna, billfish, turtles, sharks, whales, mantarays, seals, ...
  - AUST: CSIRO, JCU, AIMS, UQ; NZ: NIWA, Region: SPC
- Satellite derived and in-situ monitoring of ocean conditions – SLA, SST, Colour, Currents....
- Vessel detection & Oil spill detection via satellite radar
- Satellite tracking of non fishing vessels: LRIT, SSAS, AIS.

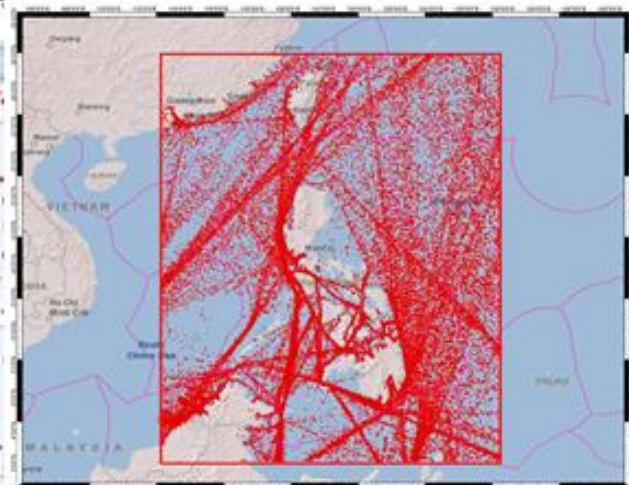
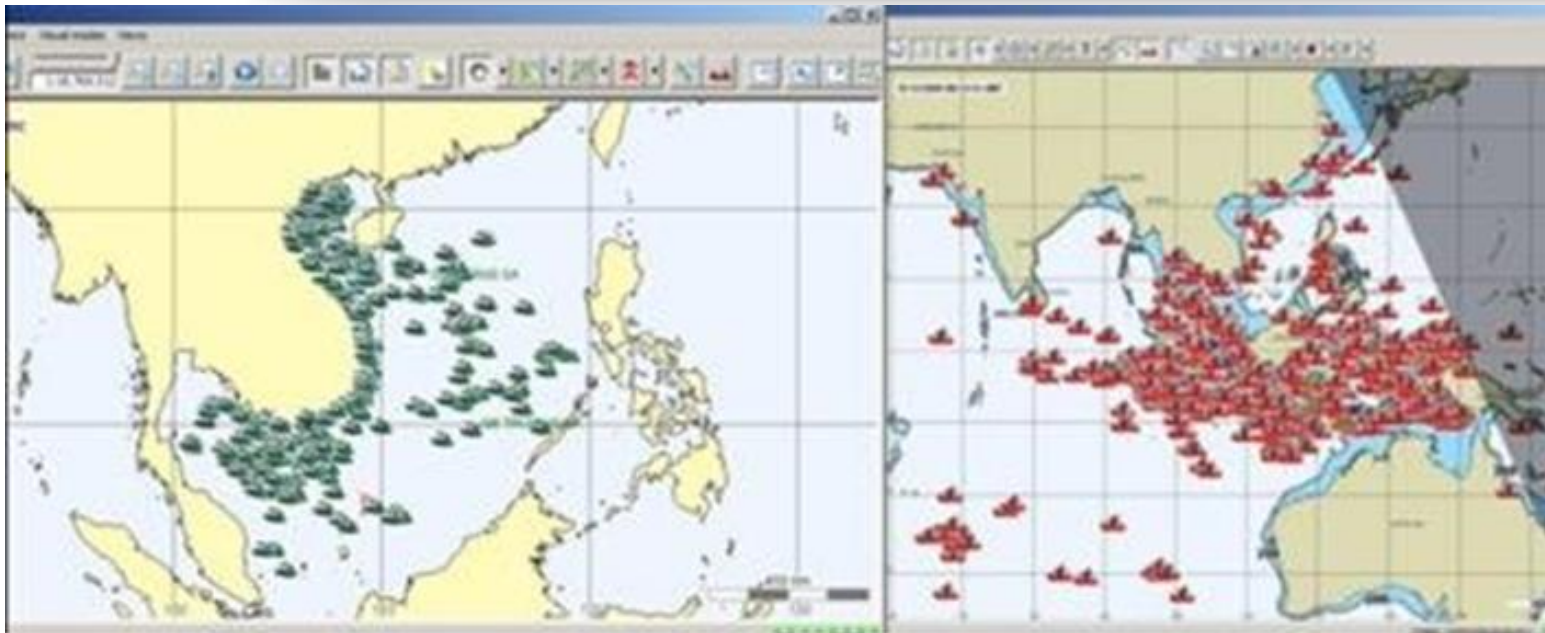
# Non E-R / E-M applications that we are involved in....

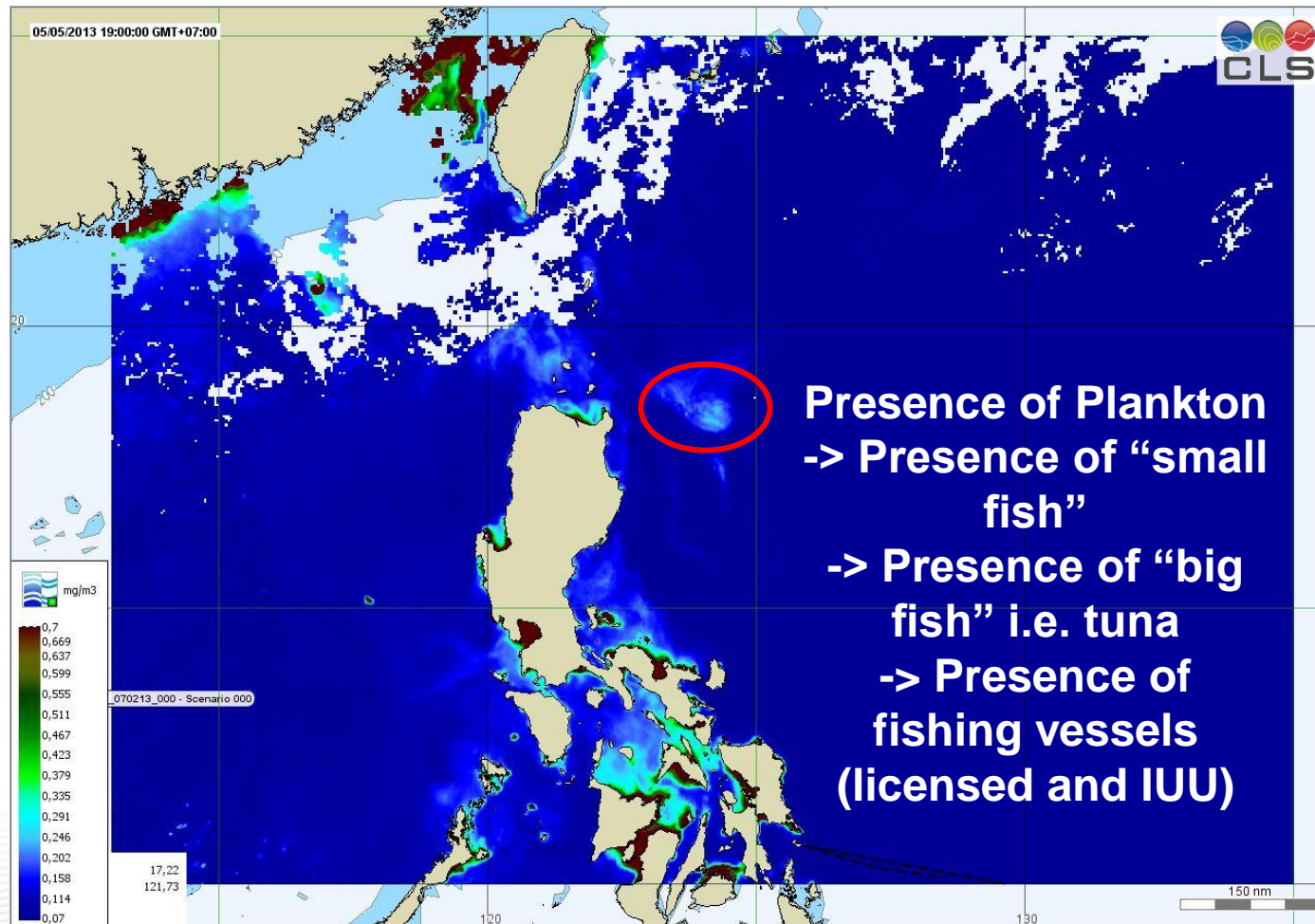




# Snapshot of VMS & AIS

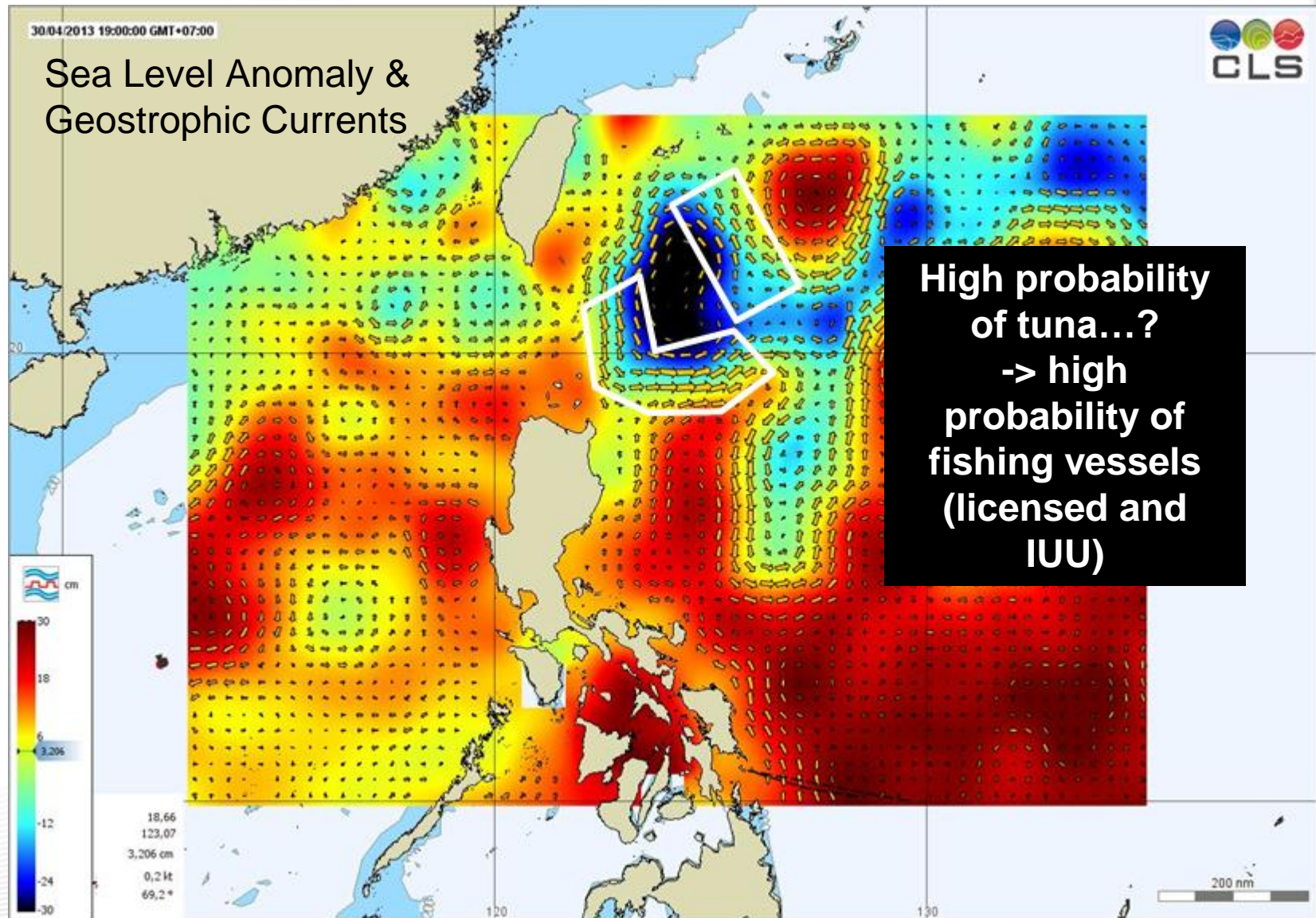
Page 6







# In addition to VMS: Ocean Data to PH BFAR



# CLS E-M, Philippines

- IF extending the term of “E-M” to include VMS:
  - Catchers (Purse Seiners) and Carriers ~100.
  - Area of operation: Everywhere and in particular WCPFC HSP1 SMA as per WCPFC CMM for VMS and SSP & BFAR Fisheries Administrative Order (No.245 Series of 2012)
  - Started 3<sup>rd</sup> quarter 2012.
  - Real time hourly positions on the hour every hour.
- VMS positions **sent SIMULTANEOUSLY** to Bureau of Fisheries and Aquatic Resources (**BFAR**) and **WCPFC**.
- Fishing company – individual web access.



# CLS E-M (VMS): WCFPC HSP1 SMA

Page 10



## CLS MTU/ALC: Thorium TST100 (FFA Type Approved)

# CLS E-R, Philippines

- Deployed and Operational: **Connect to CLS MTU.**
- E-R:
  - “MARLIN” – Marine LogBook Information
  - Originally designed for Vietnam – 3000 units to be connected to 3000 CLS MTU “LEO” (FFA type approved as well).
  - Vietnamese MARLIN – simple – local species, predefined zones, messaging (send-receive), weather reports, **typhoon alert**.
  - Typhoon alert = PRIORITY function.

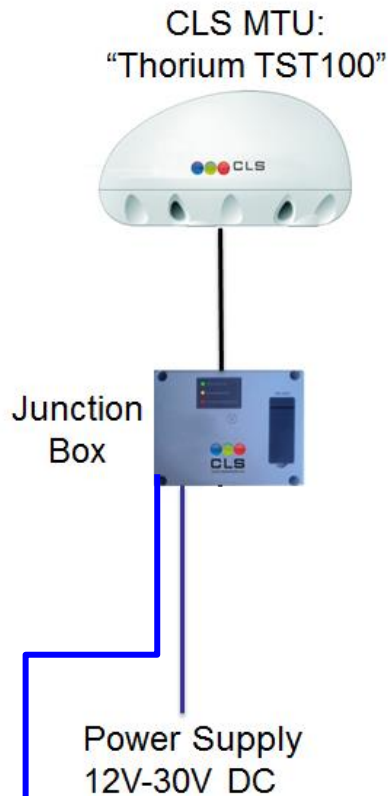




- Advantages:
  - Utilises the **SAME SECURED** satellite communications channel as VMS
    - MTU and MCSP already type approved.
    - Essentially an E-MTU: VMS, Sensors, Catch reporting + additional data/functions.
  - No additional (separate) subscription to another ‘satellite comms service provider’ to send the catch reports
    - E.g. CLS for VMS+on board sensors and “XYZ” for catch reports.
  - No additional satellite transceiver h/ware to connect to a data entry terminal to send the catch reports.
    - E.g. CLS for VMS+on board sensors and “XYZ” satellite dome to send catch reports.

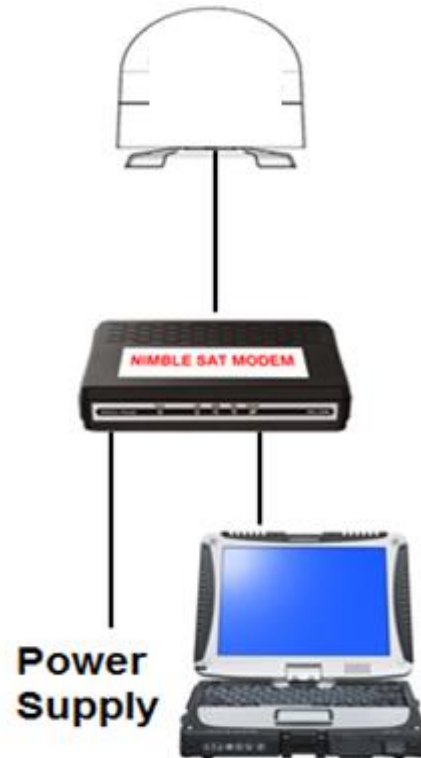
# 2 separate systems for E-R & E-M

## CLS E-M VMS and sensors



**Sensors (analogue / logical)**  
**Pump or winch**

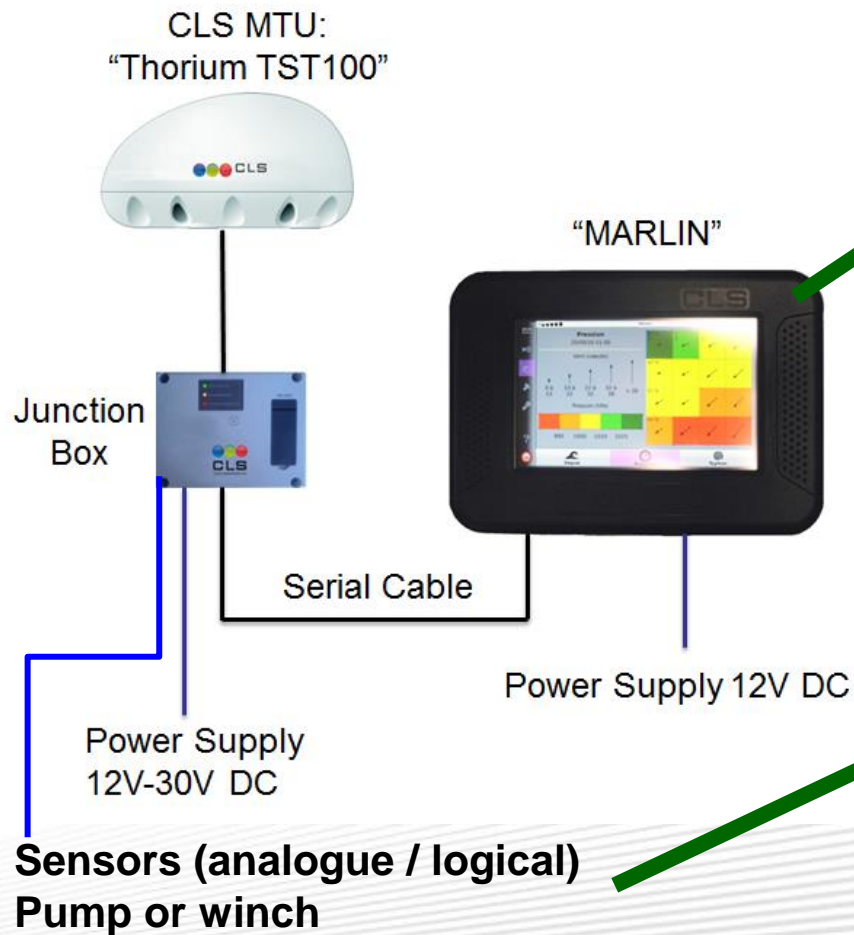
## "XYZ" E-R



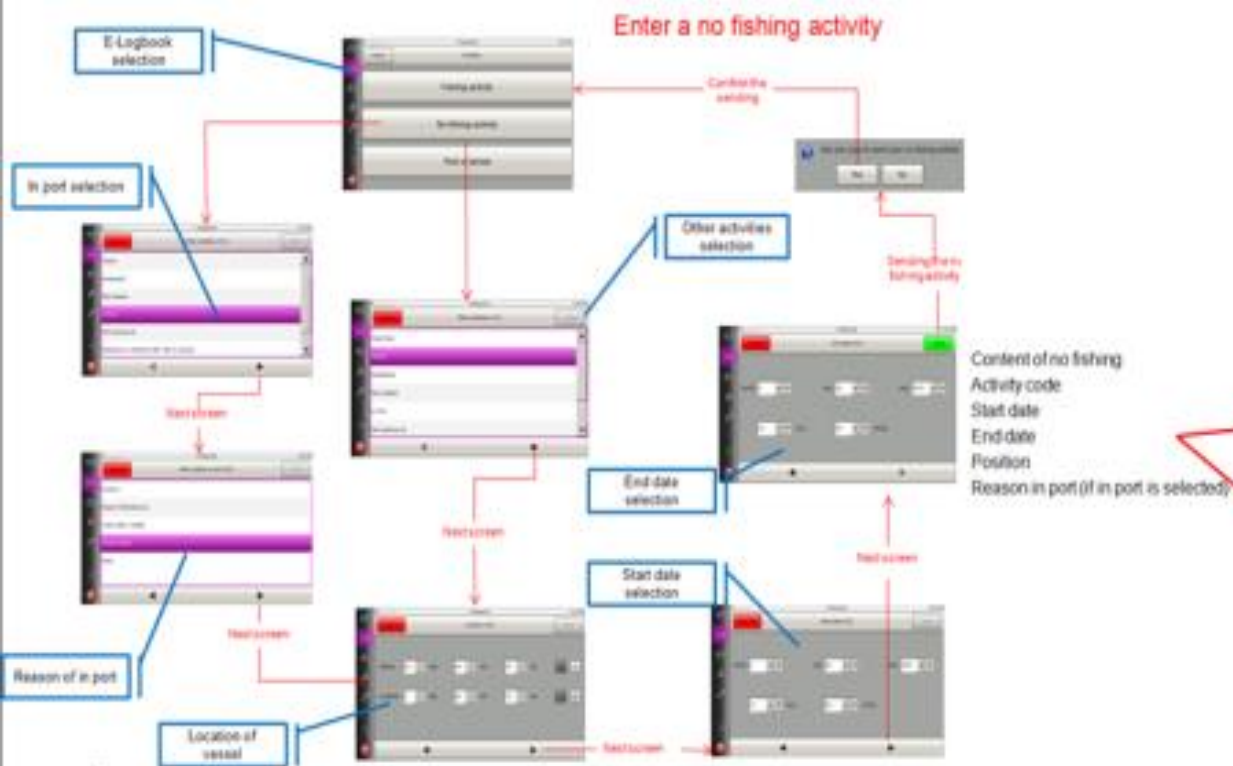
- E-M and E-R from separate service providers.
- Two satellite domes required.
- Two boxes in wheelhouse...
- Two contracts, two invoices...



# One (CLS) system for E-R & E-M



# PH MARLIN: “E” vs. Paper




The screenshot shows the 'Enter a no fishing activity' screen with the following fields:

- Activity code
- Start date
- End date
- Position
- Reason in port (if in port is selected)

The screen also displays a table with columns for 'Activity code', 'Start date', 'End date', 'Position', and 'Reason in port (if in port is selected)'. The table is currently empty.



# PH MARLIN Menu E-R



# PH MARLIN Menu E-R



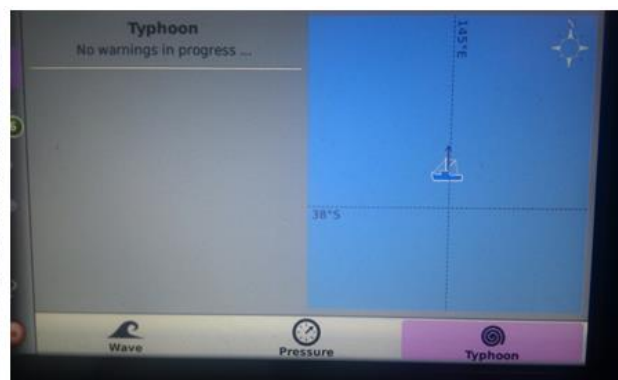
# PH MARLIN Menu **NON** E-R

Page 18

**Weather forecast\*** in 4°x4° grid ~ 240nm x 240nm with vessel location derived from MTU GPS

Typhoon alert in text format entered by Fisheries Monitoring Centre (FMC) sent to vessels that may be affected

**Can send email to as many recipients as possible, BUT can only receive from a pre-defined / white-list email addresses.**



Status of MTU



Captain, Standard, Radio Officer etc.....



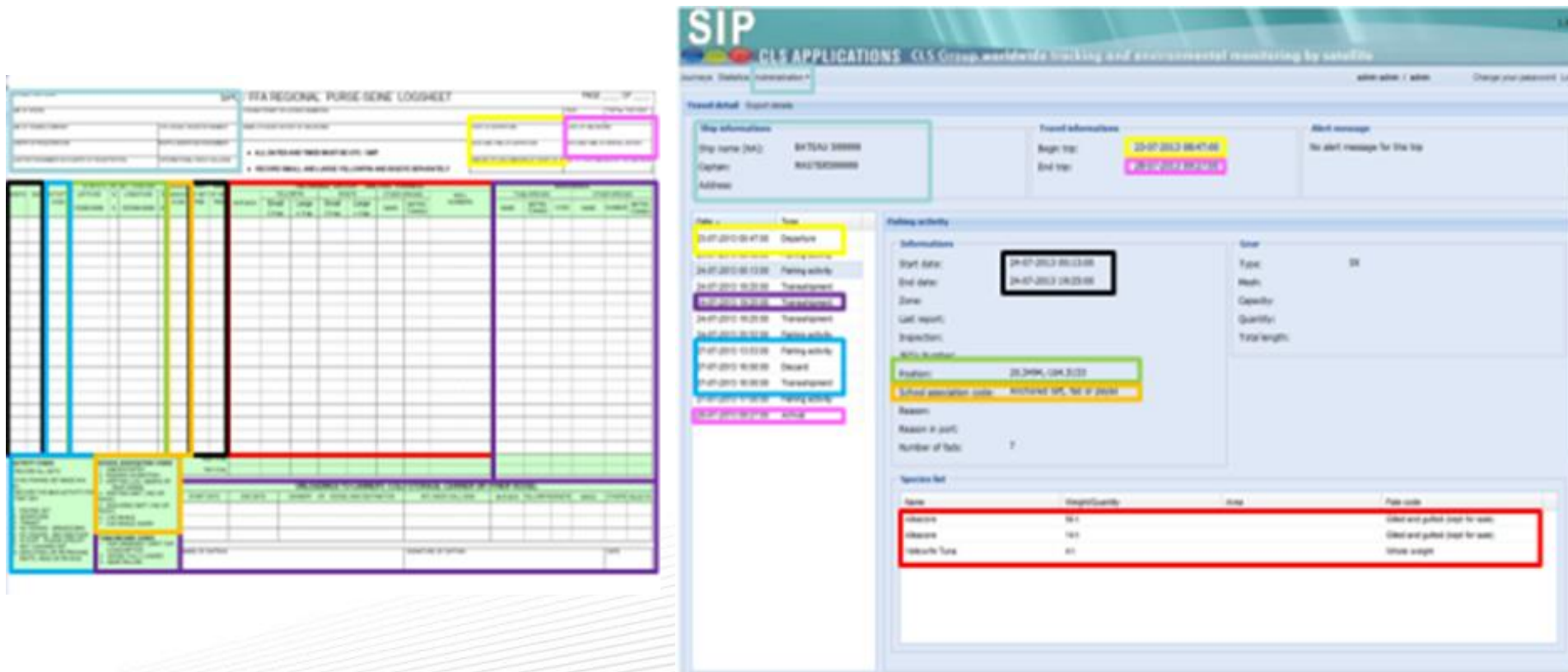
Emails

**\*weather forecast is sent from the PH FMC (i.e. from BFAR)**



# Validation

- Info sent from vessel at sea = Info displayed on dry land



The image displays two screenshots from the SIP (Système d'Information des Pêches) application. The left screenshot shows a 'PFA REGIONAL PURSE SEINE LOGSHEET' with various data fields and a table. The right screenshot shows the 'SIP CLS APPLICATIONS' interface with a 'Trip information' section and a 'Fishing activity' section.

**Trip information:**

- Trip name (NA): 847542 300000
- Capitan: 847542300000
- Address:
- Begin trip: 20-07-2013 06:47:00
- End trip: 20-07-2013 06:47:00

**Fishing activity:**

- Start date: 20-07-2013 06:47:00
- End date: 20-07-2013 06:47:00
- Zone:
- Last report:
- Inspection:
- Notes Number:
- Inspection: 20-07-2013 06:47:00
- Subsid association code: 847542300000
- Reason:
- Reason in port:
- Number of fish:

**Species list:**

Species	Weight/Quantity	Unit	Price code
Chasse	100	kg	Chasse et pêche (pour la pêche)
Chasse	100	kg	Chasse et pêche (pour la pêche)
Chasse	100	kg	Chasse et pêche (pour la pêche)

SIP = Systeme d'Information des Pêches = FIS = Fisheries Information System

# Data Example 1

**SIP**  
CLS APPLICATIONS CLS Group worldwide tracking and environmental monitoring by satellite

Journeys Statistics Administration • admin admin / admin Change your password Logout

**Statistics**

Start date: 01-01-2014 End date: 02-01-2014  
Unit of time: Week

Filter on species  
Filter on activities  
Captured species

**Captured species**

Receiver Species Parts/Weight

- From Mon 06 Jan 2014 to Sun 12 Jan 2014 (9)

- From Mon 13 Jan 2014 to Sun 19 Jan 2014 (10)

- From Mon 20 Jan 2014 to Sun 26 Jan 2014 (9)

Filter on vessels  
Filter on shipyards  
Filter on engines

Generate

100%

**Show all catch reports  
(species & quantity) sent in  
the selected time period.**

**Time period = one month  
Unit of time = weeks**

# Data Example 2

**SIP**  
CLS APPLICATIONS CLS Group worldwide tracking and environmental monitoring by satellite

Journeys Statistics Administration • admin admin / admin Change your password Logout

**Statistics**

Start date: 01-01-2014 End date: 02-01-2014  
Unit of time: Week

Filter on species  
Filter on activities  
Transshipped species  
*Filter on receivers*

Vess... Flag state Call Sign Beac  
FB M...  
FB M...  
FB M...  
FB N...  
FB N...  
FB N...  
FB R...  
FB R...  
FB T...  
FB T...  
FB T...  
FB T...  
FB T...  
FB T...  
FB T...  
FB T...  
FB T...  
FB T...  
FB T...  
FB YI...

Vess... Flag state Call Sign Beac  
803  
DAN...  
DAN...  
FB 807  
FB A...  
FB D...  
FB E...  
FB E...  
FB G...  
FB IG...  
FB L...

Page 1 of 4  
Page 1 of 1

Filter on vessels  
Filter on shipyards  
Filter on engines

**Transshipped species**

Species Parts/Weight  
- From Mon 06 Jan 2014 to Sun 12 Jan 2014 (26)  
Receiver -  
Receiver -  
Receiver -  
Receiver -  
Receiver -  
Receiver -  
Receiver -  
Receiver -  
Receiver -  
Receiver -  
Receiver -

**Show catch (species & quantity) in one month filtered by type of vessel**

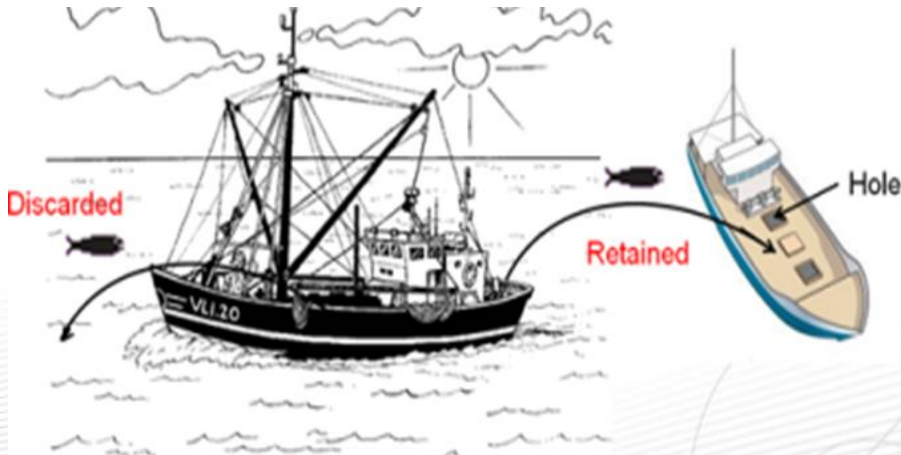
Generate

100%



# PH MARLIN -Timeline

- Commenced discussions July 2012 i.e. from Vietnam version to Philippine version.
- Additional input from SPC – Peter Williams (late 2012 to early 2013)
- Training sessions towards 3<sup>rd</sup> quarter of 2013 just prior to re-opening of HSP1 SMA.



**Quezon City (BFAR)**  
VMS, Scientific, IT



**Quezon City (BFAR Director)**



**Navotas (BFAR)**  
VMS, Observer, Scientific



**General Santos (BFAR + Industry)**





- Fully Operational.
- Challenges = The usual, but easily overcome....
  - One authority i.e. BFAR
  - One ‘fleet’ i.e. all PH flagged HSP1 SMA vessels (VMS)
  - One ‘gear type’ i.e. (group) purse seiners (E-R)
  - One home port and hence one venue for industry training
  - Clear directives and objectives:
    - national (BFAR Fisheries Administrative Order)
    - regional (WCPFC CMM for VMS)
    - use existing VMS to send catch reports
  - Established relationship between BFAR and CLS (since 2010)
  - CLS local presence/representation/exclusive installer:  
Propmech Corporation



- Hardware (recap):
  - VMS MTU = Thorium TST100 (type approved by BFAR, FFA, NMFS).
  - Data entry terminal “**MARLIN**” – **stand alone, sole purpose and function for:**
    - Sending catch reports
    - Sending-receiving messages (e-mail client functions)
    - Receiving weather reports - alerts
      - Automatic - pressure, wind, wave height
      - Manual - typhoon alert (by VMS operator)
    - NO USB port, NO head phone jack, NO DVD.

# Stock (h/ware) Status

- **Philippines** –
  - E-mon: VMS: **Thorium MTU (low on stock)**
  - E-rep: Catch Reports, Weather, Emails: **MARLIN (out of stock)**
- **Now:**
  - E-mon: (VMS): **Thorium or LEO MTU** (FFA type approved)
  - E-rep: Catch Reports: **Android tablet** (or Android Smartphone)
    - (some degree of) Flexibility
      - End user could provide their own tablet
      - If tablet supplied by CLS, then partial locked down
      - (optional) apps that could utilise same satellite channel (?) and or cellular
- **Future**
  - E-mon: (VMS): **LEO and LEO Mk-II C** ~ 1st qrt 2015.
  - E-rep: **Tablet (several OS)**

# Now: LEO + Android tablet\*



## DOME

Apart from the usual, back up internal battery for 72 hours of operation.

**Memory of logged GPS =  
8700 positions e.g. every  
15 mins = 90 days**

(irrespective of automatic  
GPS reporting interval) of  
300 positions for  
THORIUM

## JUNCTION BOX

Cable to Dome  
Cable to Power supply



\*works with Android smart phone



- Pilot test for Longliners
  - Vanuatu (3 vessels) – May 2014
    - CLS LEO for VMS
    - Catch report via Android tablet – TBD source of tablet e.g. supplied or end user.
    - Who pays - TBD.
- Requirement-development?
  - Current CLS Android is already configured for US NMFS.
  - Adapt to SPC Regional LogSheet for Long line – simple.
  - Transmitted catch reports on CLS SIP-FIS secured server accessible by VU Dept of Fisheries.
  - VMS to
    - Vanuatu Dept of Fisheries as per normal – secured web access.
    - FFA + WCPFC + vessel owner simultaneously (TBD)

- Video of the Android sending a catch report.





- What ELSE can we do with this?
- As all tablets are wifi enabled, when in (stable) cellular coverage e.g. in or close to port; can be tethered to a smart phone with a cellular broadband connection:
  - **COULD** send **anything-everything** in addition to what was already sent whilst at sea.
  - Receive updated forms/regulation/weather reports etc.

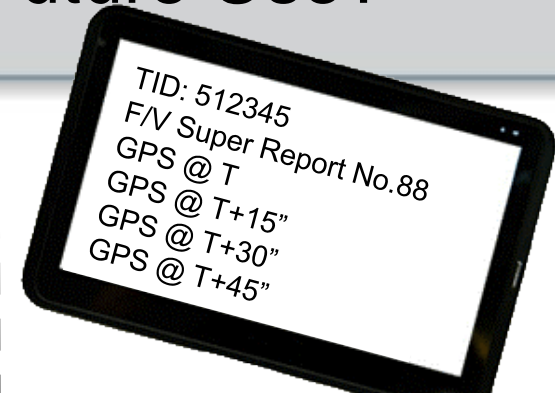


# Android – Concept? Future Use?



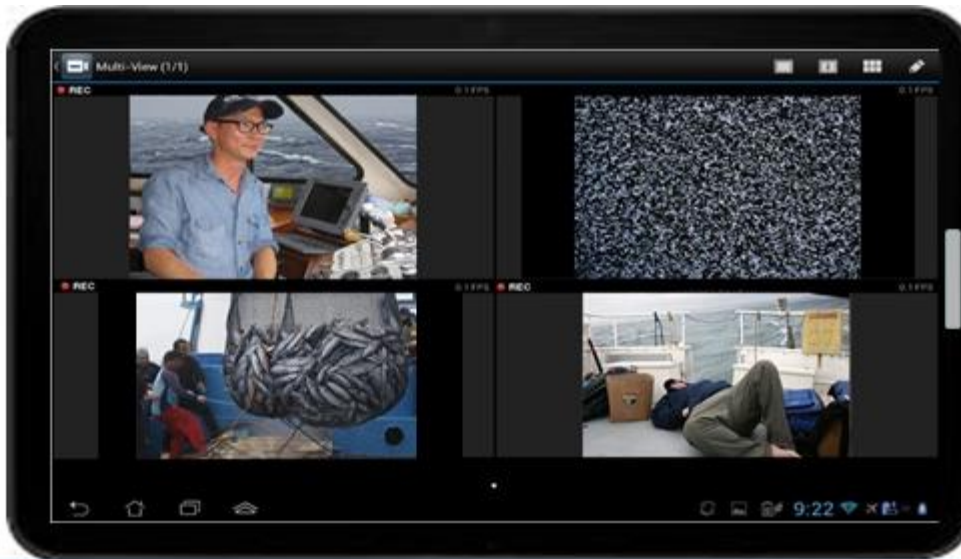
At sea: VMS hourly – default.  
GPS refreshed every second.  
Refreshed GPS logged every 15 mins  
inside the dome.

**When tablet is connected to send catch reports etc COULD retrieve all the logged information from the dome.**  
**(compliance/data handling issues)**



Page 32

In port / cellular coverage



*Image grab from video, filename:*  
*"CAM3\_2013\_12\_09\_0528\_04N37M06S\_146E11M09S.jpg"*  
*Geotagged from VMS or on board recording system.*



In port / cellular coverage

At sea: Connect to on board recording system, use in wheel house as video streamer or controller (\*.mpg to hard disk drive of recording system).



- From previous scenario, the tablet then becomes more than just a hardware platform to send catch reports:
  - “Unofficial” VMS.
  - “Data Collector”
- Who supplies the tablet?
  - If supplied by CLS – full or partial lock down - TBD e.g. disable all social media apps?
  - For user supplied tablet (or smartphone or notebook) – issue of h/ware type approval.

## DONE / AVAILABLE

- VMS – type approved MTU (Thorium & LEO) and type approved MCSP (CLS) as per FFA standards and hence WCFCP.
- Satellite transmission of VMS, sensors, catch reports in real time to primary recipient and simultaneously to authorised recipient(s).
- Dedicated (locked down-limited functions) Android tablet or app (user supplied h/ware) with wifi-cellular via tablet/mobile broadband.

## FUTURE

- Additional-optional functions/apps and capability to use non satellite comms i.e. **cellular via MTU** in addition to wifi-cellular via tablet/mobile broadband.



# Acknowledgement (1/2)

- **PH Bureau of Fisheries & Aquatic Resources:**
  - National Director Atty. Asis Perez
  - Director Tong, Region XII
  - Dr. Alma Dickson, Head of National Marine Fisheries Development Center
  - Mr Raffy Ramiscal, Chief Scientist
  - Zaldy Perez, Marlo Demo-os, Paquito Relucio Jr, Jerry Jay Magno, MJ Mabanglo, Navotas Team & Quezon City Team, Region XII team.
- **Socksargen Federation of Fishing and Allied Industries, Inc. (SFFAI)**
  - Mdm Rosanna Contreras, Executive Director -

- **Vanuatu**
  - **Fisheries Department**
    - William Naviti, Wesley Obed, Tony Taleo and of course Moses Amos Tinapua (ex Director and now Director FAME, SPC)
  - **Tunafishing Limited**
    - MP Christophe Emelee
- **SPC** – Peter Williams, Principal Fisheries Scientist, Data Management, OFP.
- Venue host: **FFA**
- Organiser: Kerry Smith (**AFMA / WCPFC**) & **WCFPC** Secretariat
- WCFPC ER EM Report: **Dr Ian Knuckey & Steve Dunn**
- **Propmech Corporation** – CLS (exclusive) certified installer in the Philippines - 10 offices-service centres nationwide/Maritime support – engines, boat builders, fishing, shipping.



CLS



THANK YOU